

Key Stage 3 Report Guidance

Attendance and Punctuality

Attendance %

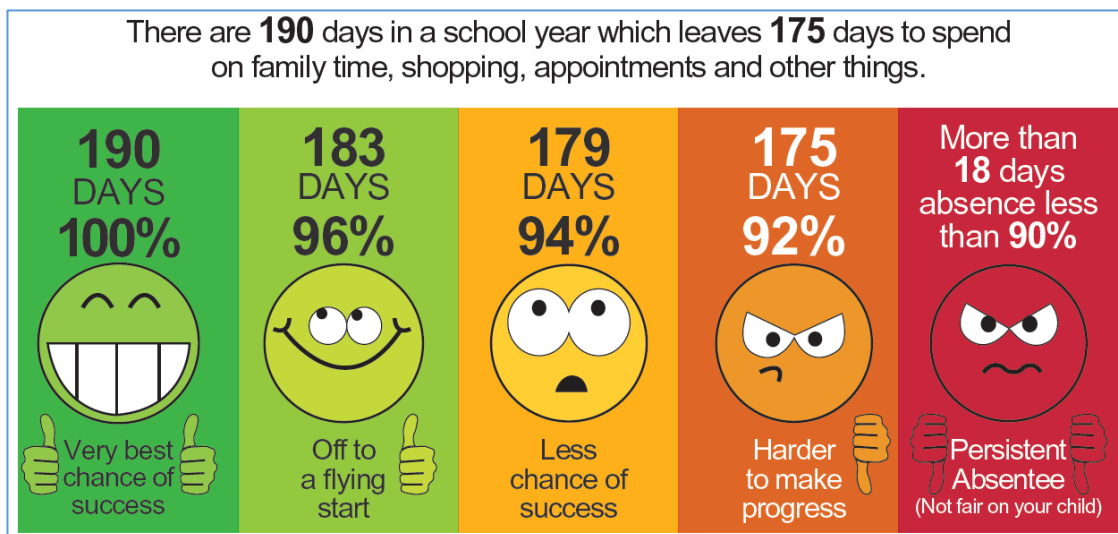
A normal school day is made up of two sessions; morning and afternoon, and a pupil receives a mark for both. For each session a pupil can be present or absent, and a pupil's overall attendance is the percentage of sessions for which they are present.

Authorised Absences

The number of sessions (AM and PM) where a pupil has been given an absent mark for authorised reasons (e.g. medical or dental appointments, illness, religious observance).

Unauthorised Absences

The number of sessions (AM and PM) where a pupil has been given an absent mark for unauthorised reasons (e.g. holiday not authorised by the school, no reason provided for absence).



Late Sessions

The number of sessions (AM and PM) where the pupil has been late to school before the register has closed. A late mark is still counted as statistically present but helps identify those whose punctuality is not good.

Did you know? **10 minutes late every day = 32 hours lost learning each year.**

Targets, Predicted Grades and Effort

Target Grades

In each subject, the target grade is a challenging but realistic goal that a pupil should aim for. It provides an indication of a pupil's potential and helps motivate them to be ambitious and aspirant in terms of their outcomes. Where a pupil makes better than expected progress in the academic year their target grade may be raised.




Predicted Grades

In Year 7 and Year 8 we predict grades using the same 9 to 1 scale that is used for GCSEs, however, because the pupils are not yet taking GCSE courses the grades need to be interpreted differently.

Throughout Year 7 and Year 8 pupils across all Delta secondary academies, around 1600 pupils in each year group, take the same assessments in their subjects. We use the results from these assessments to set grade boundaries – an example of this might be that in a Year 7 Science assessment the top 3% of pupils would be awarded a grade 9 (the highest grade), the next 6% a grade 8 and so on, similar to how grades are awarded in the actual GCSE exams. Over the academic year a pupil might get different grades in each of their assessments, but this is an important part of the evidence that teachers use alongside the standard of class work and home work, rate of progress, effort, and their professional judgement to predict the standard a pupil may be capable of.

A lot can change as a pupil completes each year of secondary school and therefore the predicted grade in Year 7 and Year 8 is not a guaranteed outcome but more of an indication of what could be possible, given the evidence available at the time of reporting, if the pupil is working at the same standard when studying GCSEs.

Predicted grades are shaded one of the three colours below to determine whether a pupil is progressing towards the standard reflected in their target grade.

	Predicted grade is equal to or above the target grade.
	Predicted grade is one grade below the target grade.
	Predicted grade is more than one grade below the target grade.

Effort Grades

Effort grades give an indication of whether a pupil's current attitude to learning, their level of interest, enthusiasm and standard of class work and homework, is good enough to ensure they reach their potential. Where effort is not good it is likely to affect a pupil's progress in learning.

Effort grades are **Outstanding**, **Good**, **Requires Improvement** and **Unsatisfactory**.